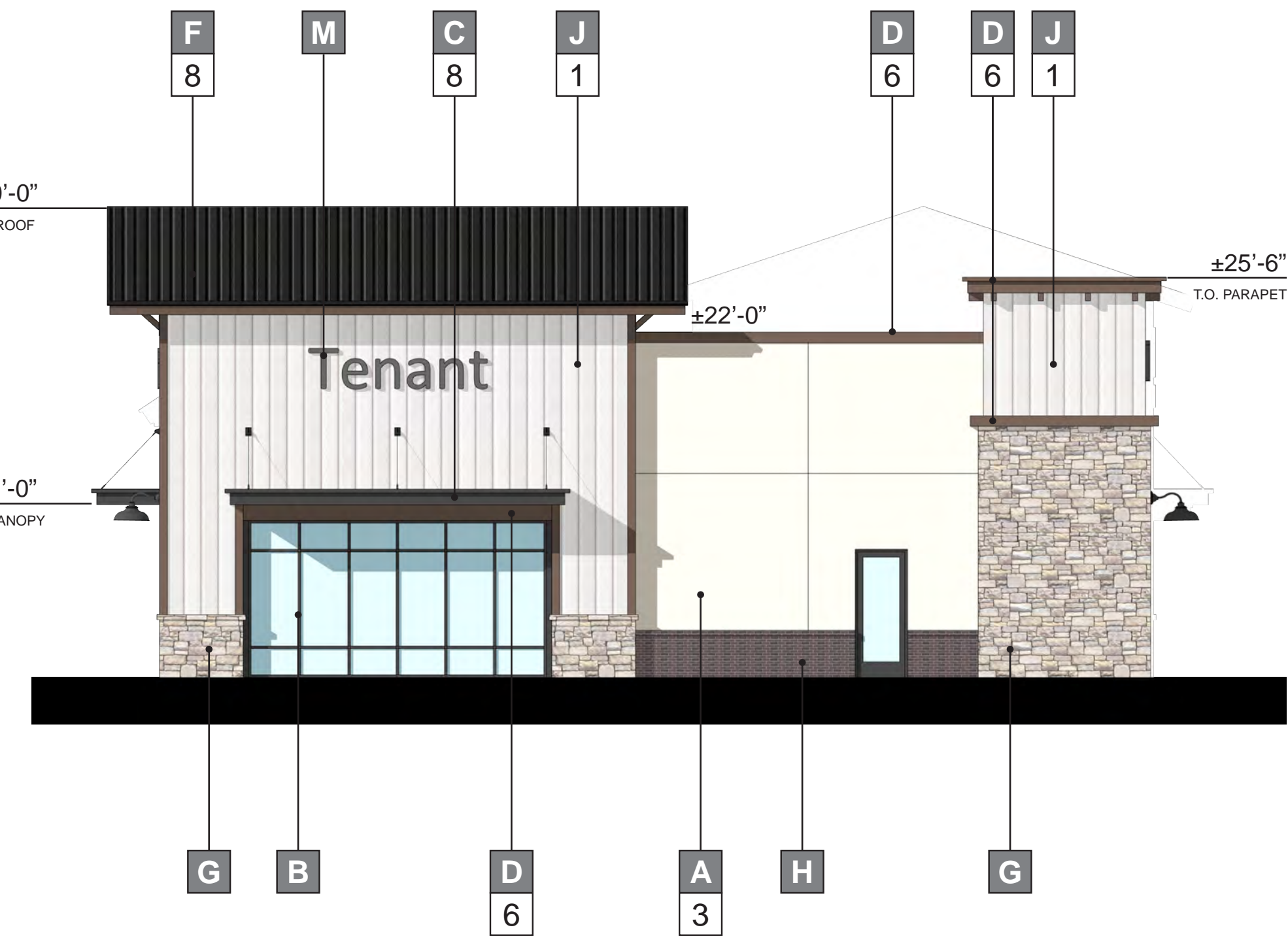
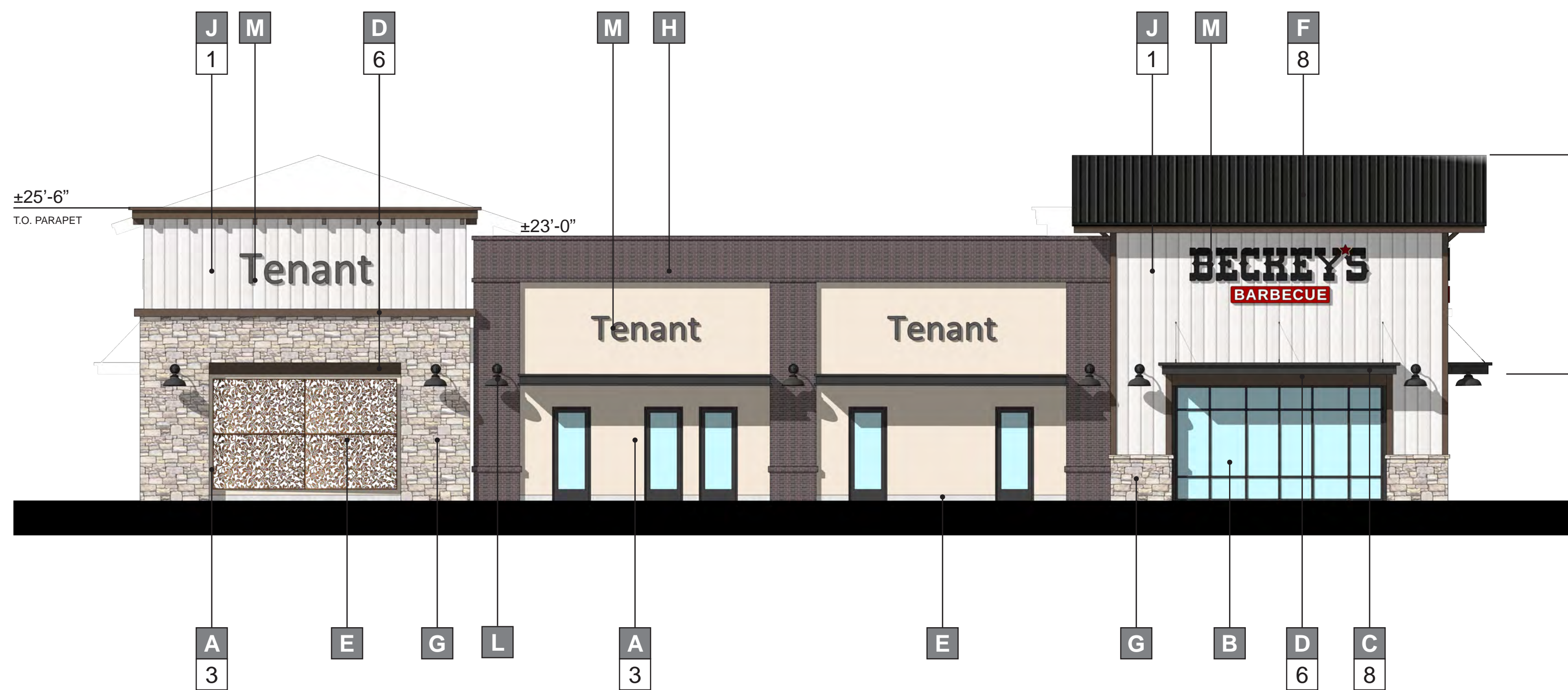


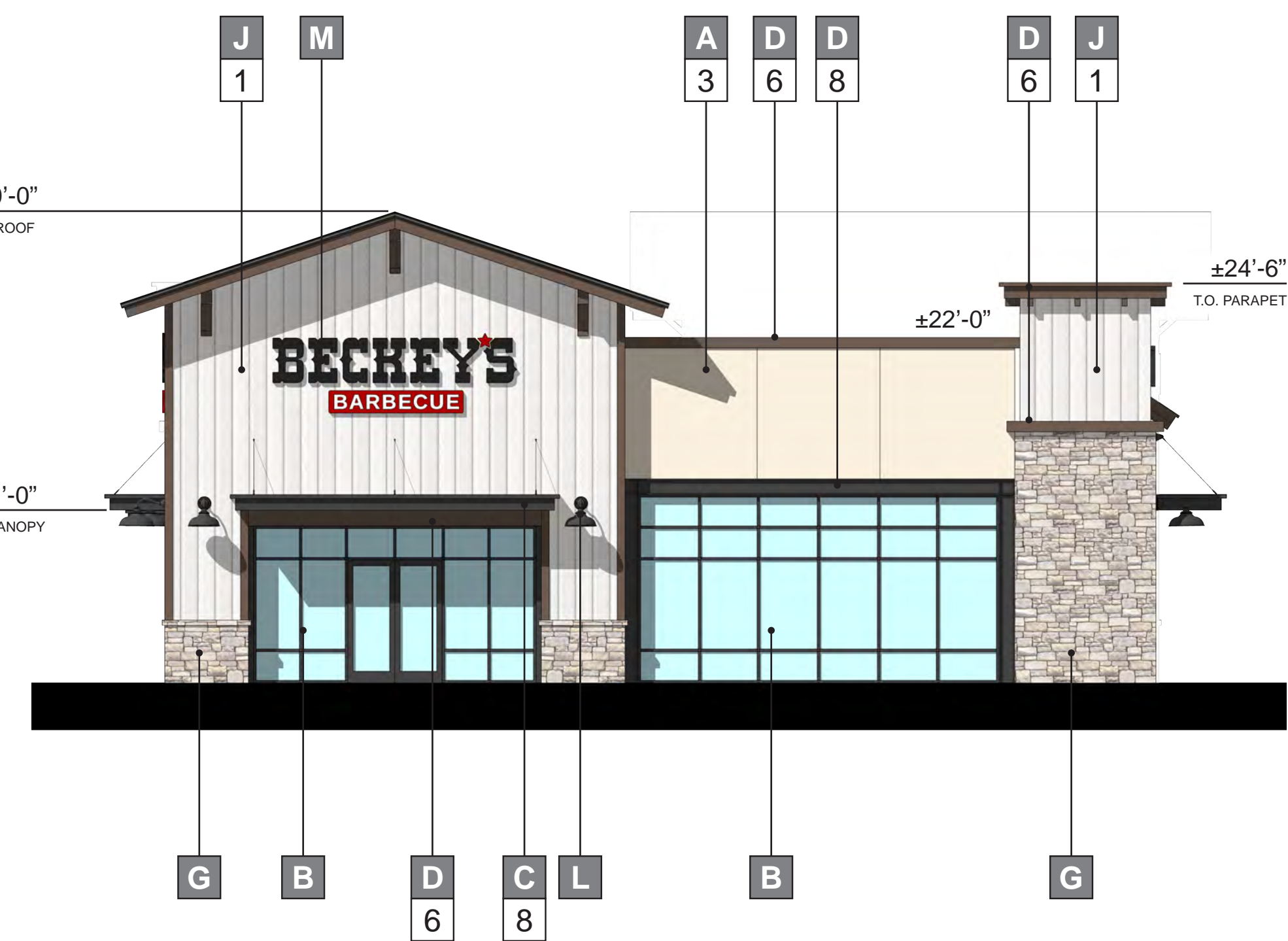
① NORTHEAST ELEVATION (FRONT)



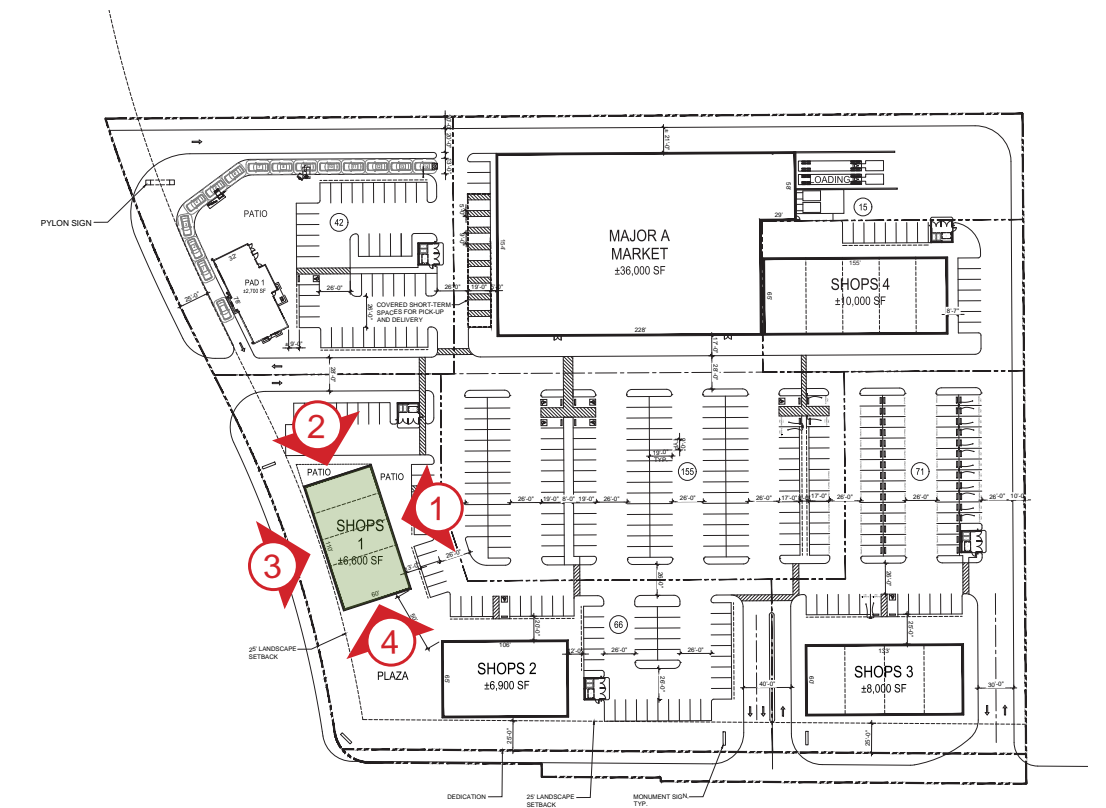
② NORTHWEST ELEVATION (RIGHT)



③ SOUTHWEST ELEVATION (REAR)



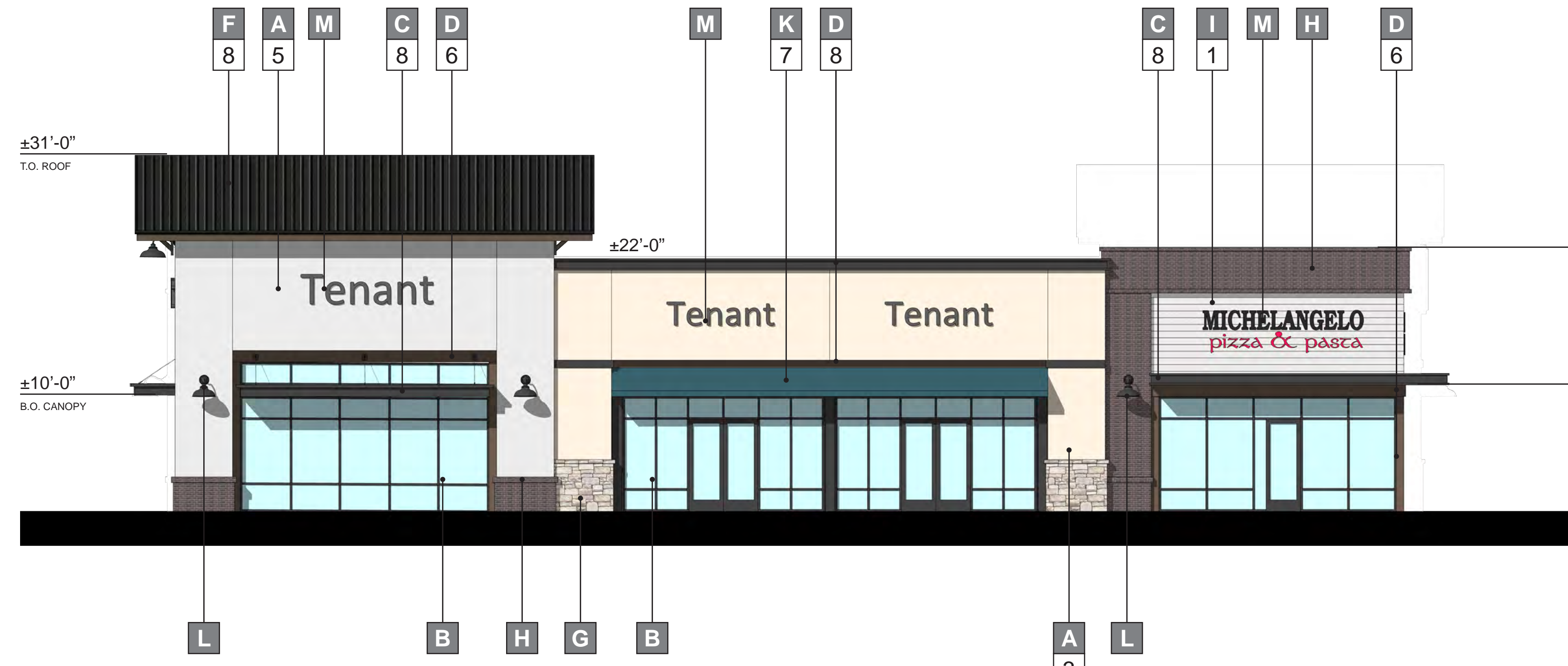
④ SOUTHEAST ELEVATION (LEFT)



Material Legend

MATERIALS & FINISHES	
A	STUCCO: OMEGA - "20/30 SAND"
B	STOREFRONT: ARCADIA - AB6 "MEDIUM BRONZE"
C	METAL CANOPY
D	ARCHITECTURAL TRIM / CORNICE
E	LASERCUT METAL PANEL (MANUF. & PATTERN DESIGN TBD.)
F	STANDING SEAM METAL ROOF
G	STONE VENEER: ELDORADO STONE - LIMESTONE "GRAND BANKS"
H	BRICK VENEER: SIOUX CITY BRICK - "SAVANNAH TUDOR"
I	COMPOSITE SIDING: JAMES HARDIE - BEADED SELECT CEDARMILL
J	BOARD & BATTEN SIDING: JAMES HARDIE - SELECT CEDARMILL
K	FABRIC AWNING
L	LIGHT FIXTURE (MANUFACTURER TBD.)
M	TENANT SIGNAGE (BY OTHERS)
N	PRECAST CONCRETE BASE
O	SHUTTER

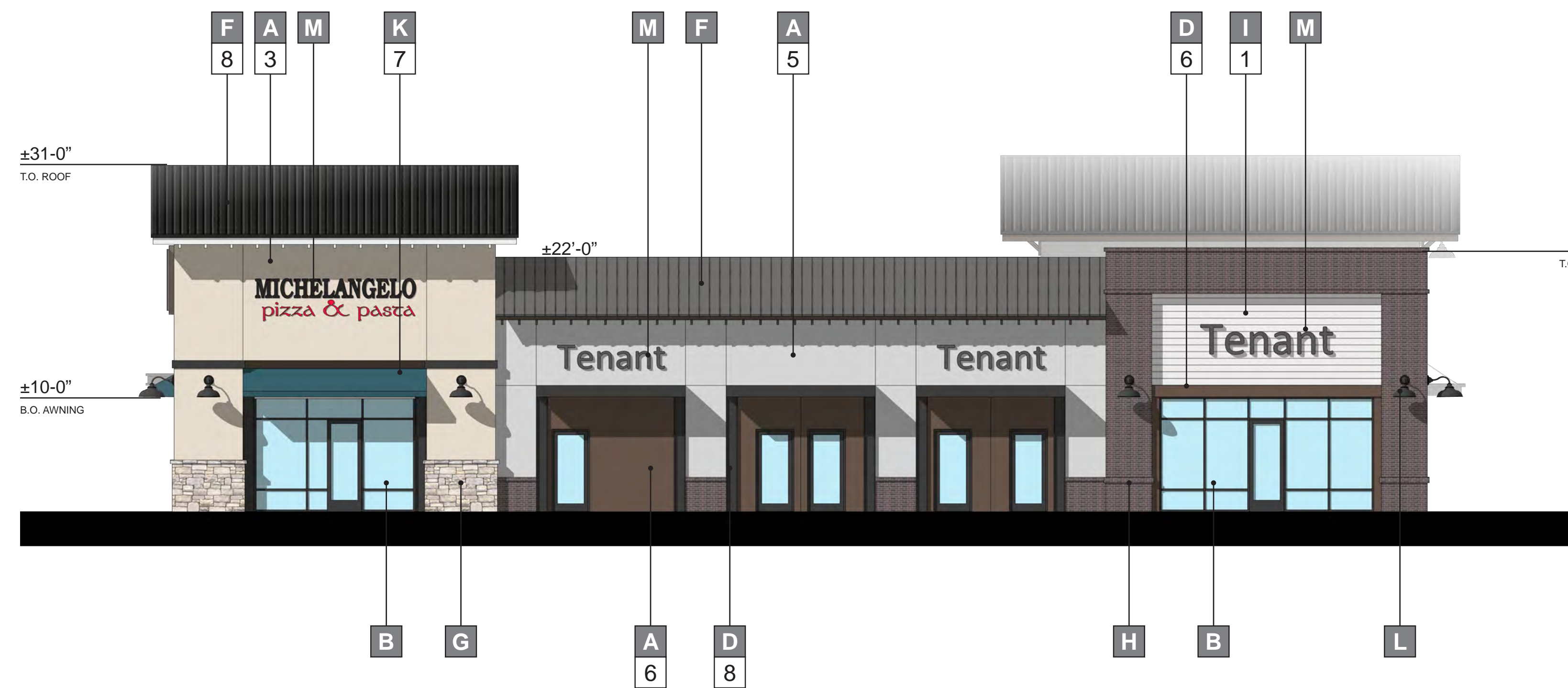
PAINT COLORS		
1	DUNN EDWARDS	DEW380 "WHITE"
2	DUNN EDWARDS	DEW382 "FADED GRAY"
3	DUNN EDWARDS	DE6213 "FINE GRAIN"
4	DUNN EDWARDS	DET625 "RECLAIMED WOOD"
5	DUNN EDWARDS	DE6381 "SILVER BULLET"
6	DUNN EDWARDS	DE6063 "BLACK WALNUT"
7	DUNN EDWARDS	DEA182 "ENCORE TEAL"
8	DUNN EDWARDS	DEA187 "BLACK"



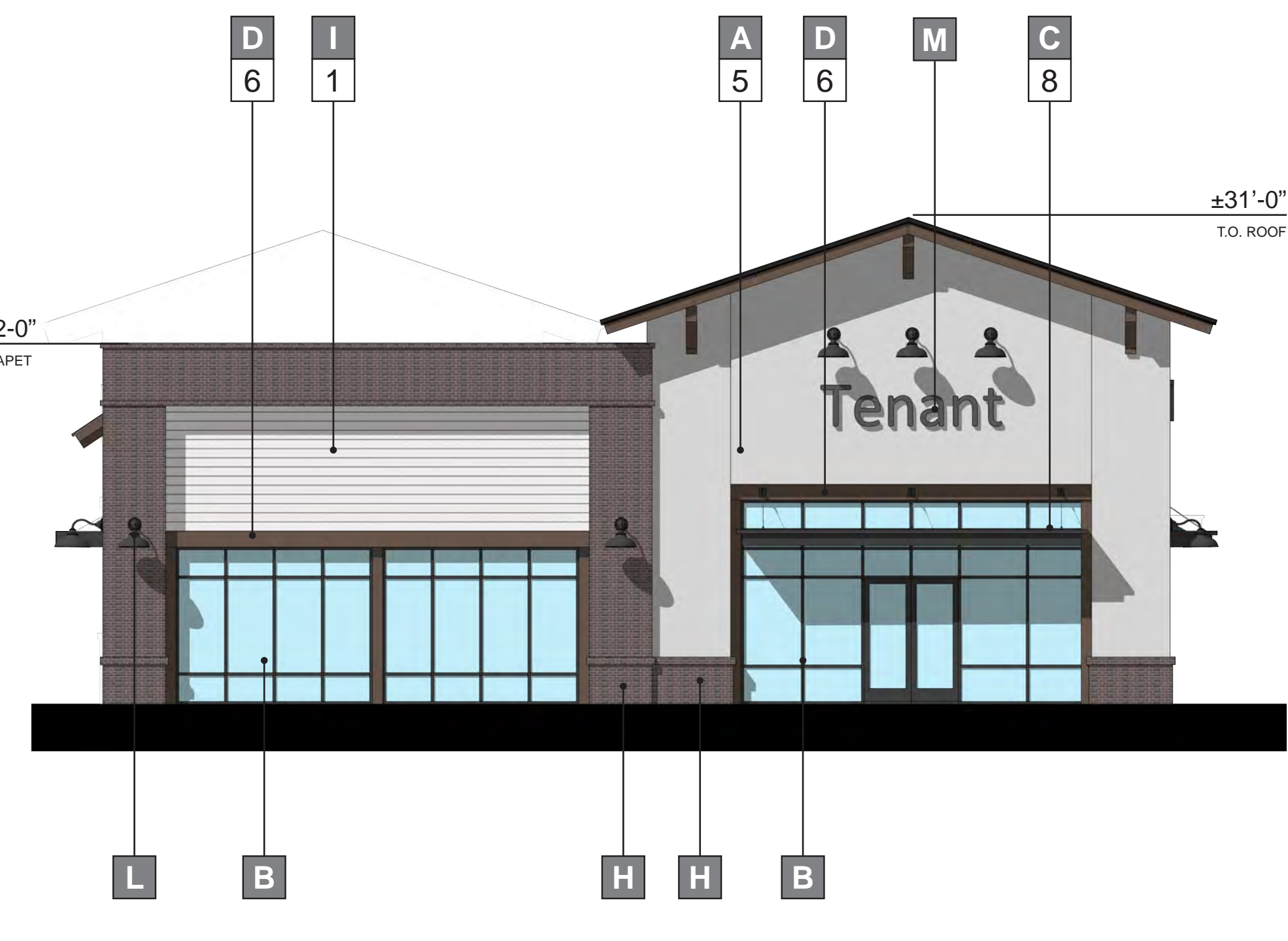
① NORTH ELEVATION (FRONT)



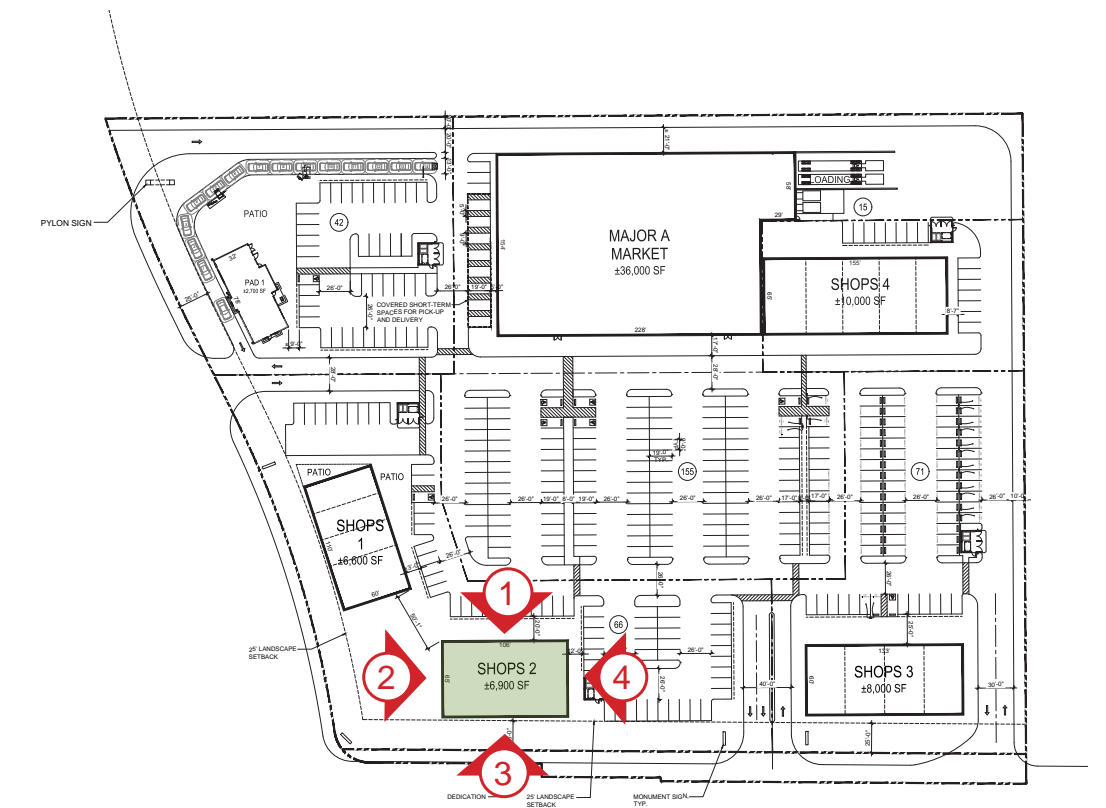
② WEST ELEVATION (RIGHT)



③ SOUTH ELEVATION (REAR)



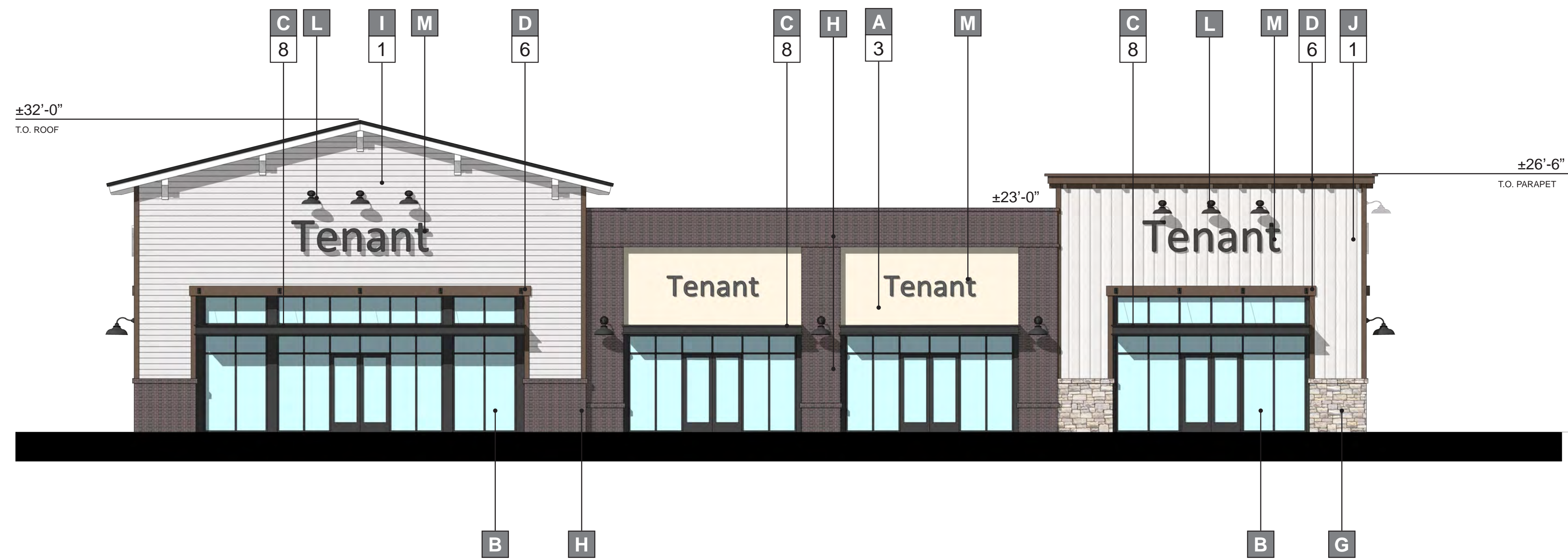
④ EAST ELEVATION (LEFT)



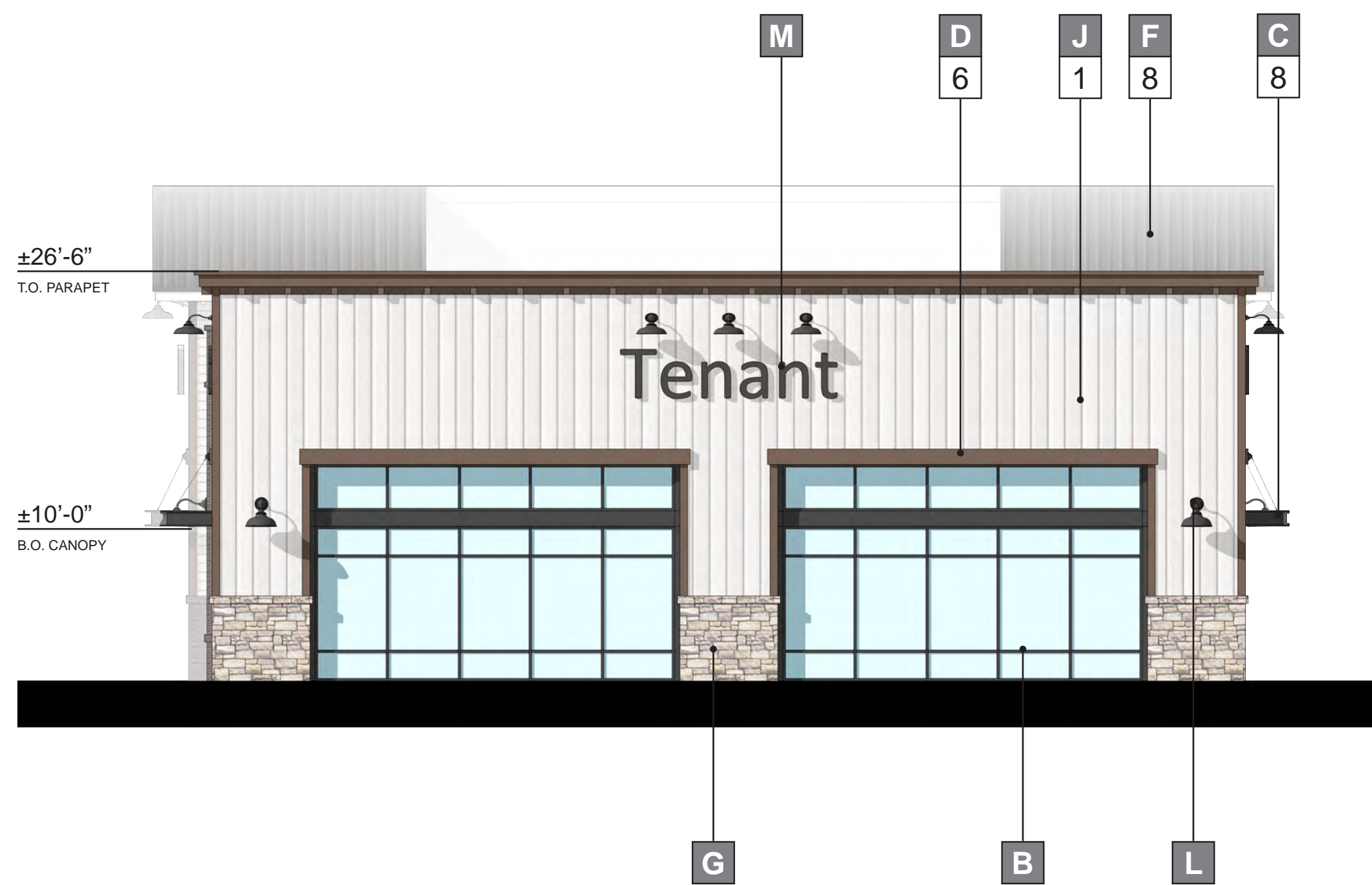
Material Legend

MATERIALS & FINISHES	
A	STUCCO: OMEGA - "20/30 SAND"
B	STOREFRONT: ARCADIA - AB6 "MEDIUM BRONZE"
C	METAL CANOPY
D	ARCHITECTURAL TRIM / CORNICE
E	LASERCUT METAL PANEL (MANUF. & PATTERN DESIGN TBD.)
F	STANDING SEAM METAL ROOF
G	STONE VENEER: ELDORADO STONE - LIMESTONE "GRAND BANKS"
H	BRICK VENEER: SIOUX CITY BRICK - "SAVANNAH TUDOR"
I	COMPOSITE SIDING: JAMES HARDIE - BEADED SELECT CEDARMILL
J	BOARD & BATTEN SIDING: JAMES HARDIE - SELECT CEDARMILL
K	FABRIC AWNING
L	LIGHT FIXTURE (MANUFACTURER TBD.)
M	TENANT SIGNAGE (BY OTHERS)
N	PRECAST CONCRETE BASE
O	SHUTTER

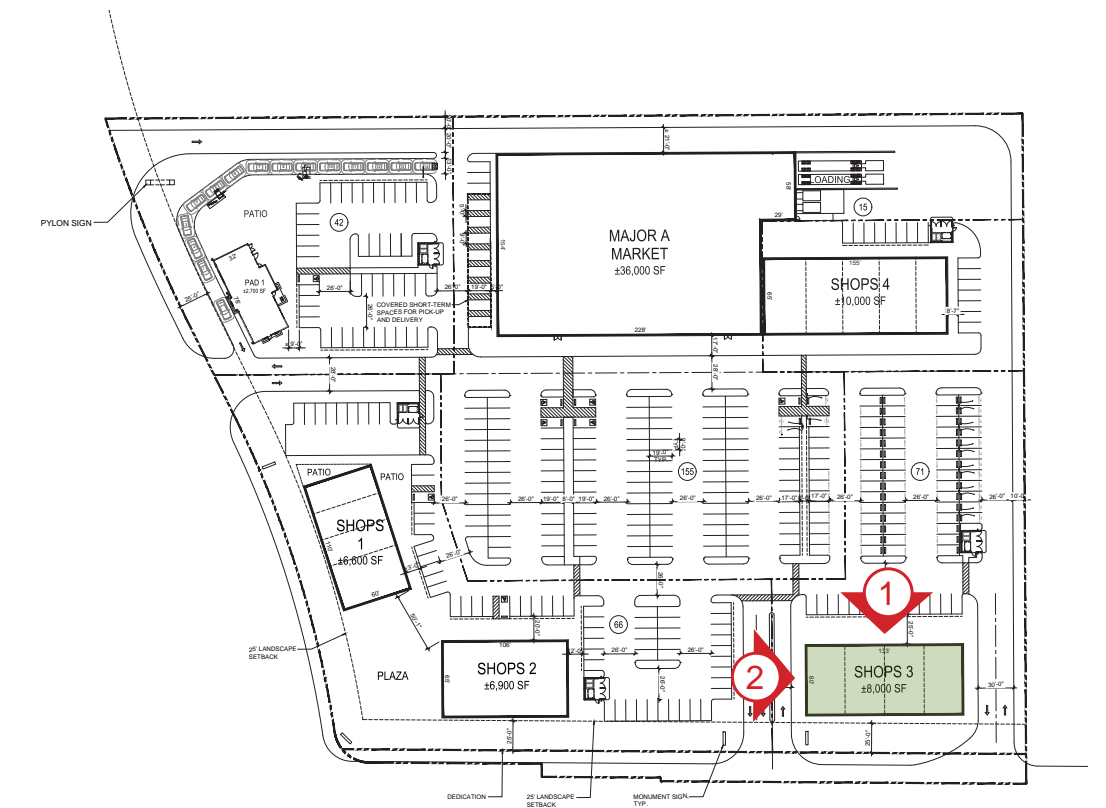
PAINT COLORS		
1	DUNN EDWARDS	DEW380 "WHITE"
2	DUNN EDWARDS	DEW382 "FADED GRAY"
3	DUNN EDWARDS	DE6213 "FINE GRAIN"
4	DUNN EDWARDS	DET625 "RECLAIMED WOOD"
5	DUNN EDWARDS	DE6381 "SILVER BULLET"
6	DUNN EDWARDS	DE6063 "BLACK WALNUT"
7	DUNN EDWARDS	DEA182 "ENCORE TEAL"
8	DUNN EDWARDS	DEA187 "BLACK"



① NORTH ELEVATION (FRONT)



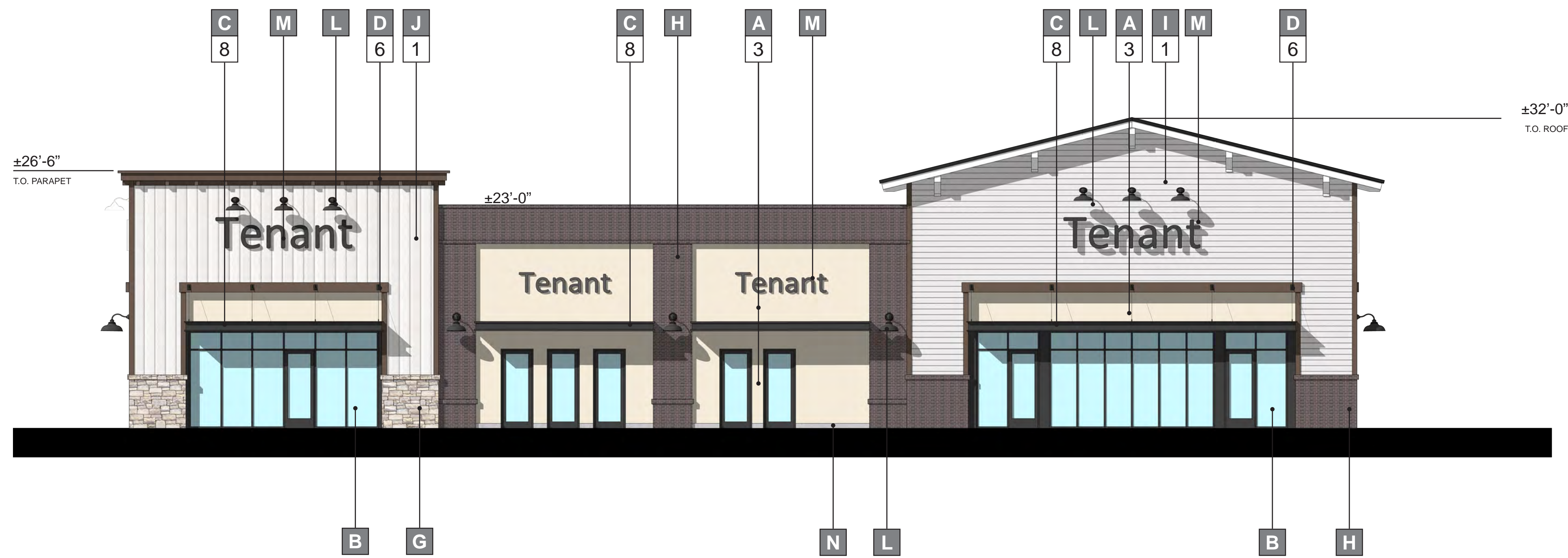
② WEST ELEVATION (RIGHT)



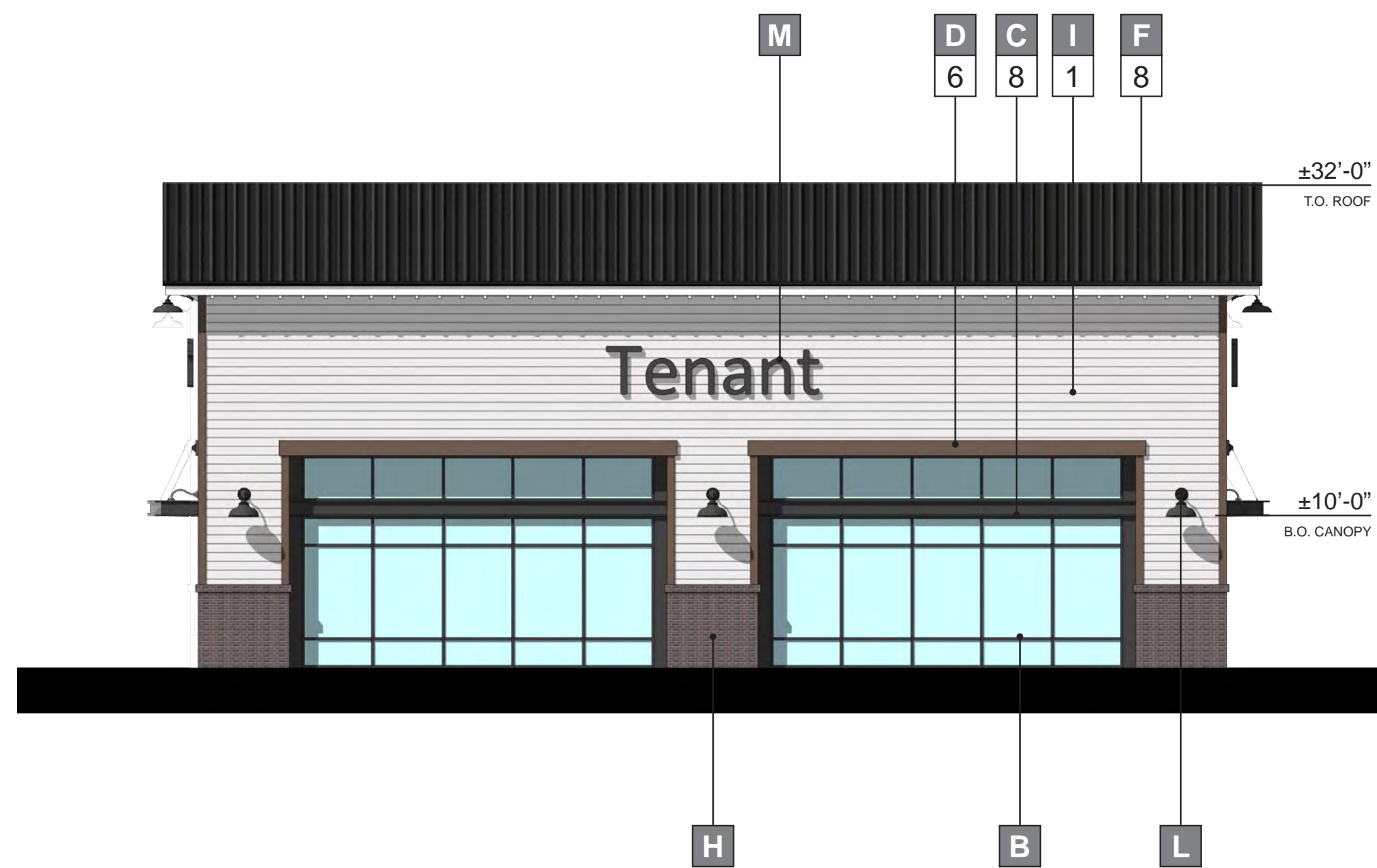
Material Legend

MATERIALS & FINISHES	
A	STUCCO: OMEGA - "20/30 SAND"
B	STOREFRONT: ARCADIA - AB6 "MEDIUM BRONZE"
C	METAL CANOPY
D	ARCHITECTURAL TRIM / CORNICE
E	LASERCUT METAL PANEL (MANUF. & PATTERN DESIGN TBD.)
F	STANDING SEAM METAL ROOF
G	STONE VENEER: ELDORADO STONE - LIMESTONE "GRAND BANKS"
H	BRICK VENEER: SIOUX CITY BRICK - "SAVANNAH TUDOR"
I	COMPOSITE SIDING: JAMES HARDIE - BEADED SELECT CEDARMILL
J	BOARD & BATTEN SIDING: JAMES HARDIE - SELECT CEDARMILL
K	FABRIC AWNING
L	LIGHT FIXTURE (MANUFACTURER TBD.)
M	TENANT SIGNAGE (BY OTHERS)
N	PRECAST CONCRETE BASE
O	SHUTTER

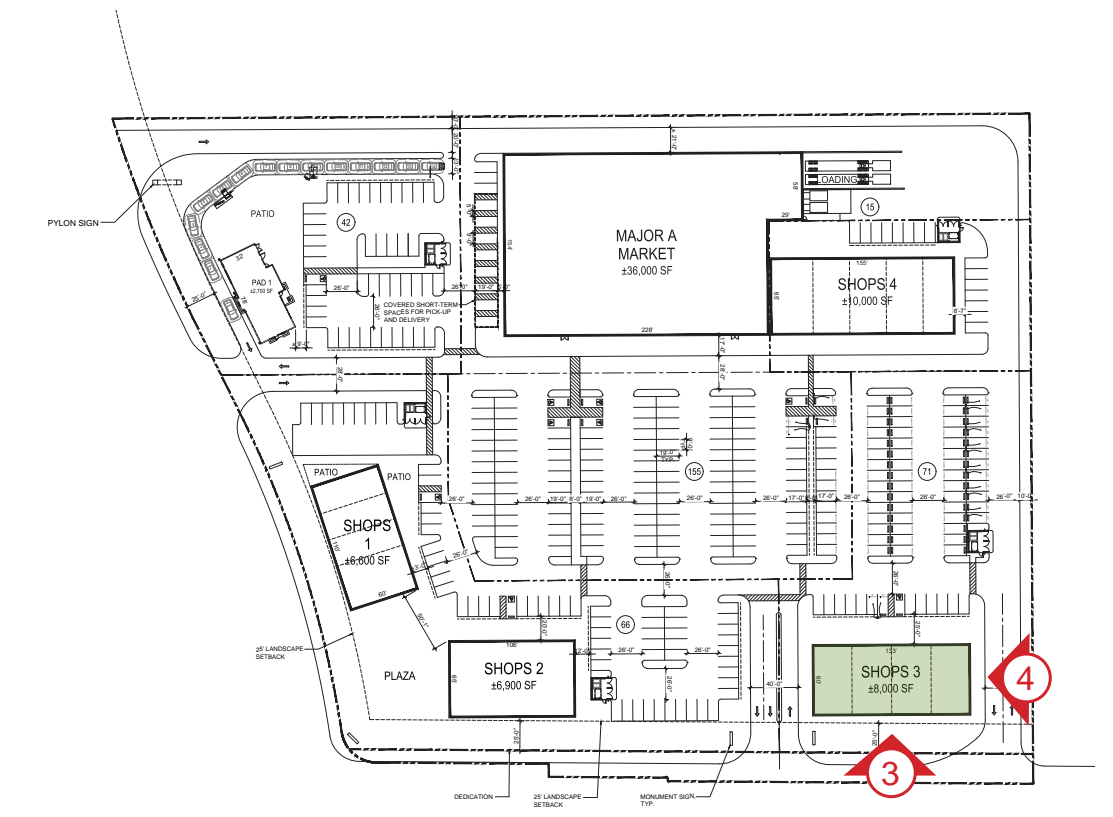
PAINT COLORS		
1	DUNN EDWARDS	DEW380 "WHITE"
2	DUNN EDWARDS	DEW382 "FADED GRAY"
3	DUNN EDWARDS	DE6213 "FINE GRAIN"
4	DUNN EDWARDS	DET625 "RECLAIMED WOOD"
5	DUNN EDWARDS	DE6381 "SILVER BULLET"
6	DUNN EDWARDS	DE6063 "BLACK WALNUT"
7	DUNN EDWARDS	DEA182 "ENCORE TEAL"
8	DUNN EDWARDS	DEA187 "BLACK"



③ SOUTH ELEVATION (REAR)



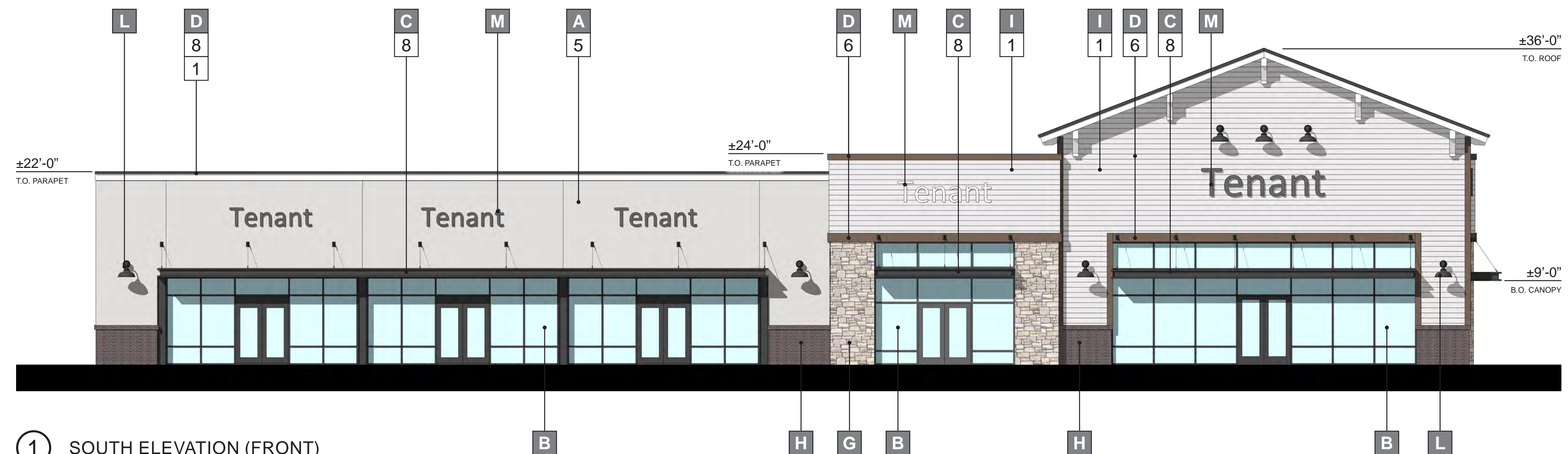
④ EAST ELEVATION (LEFT)



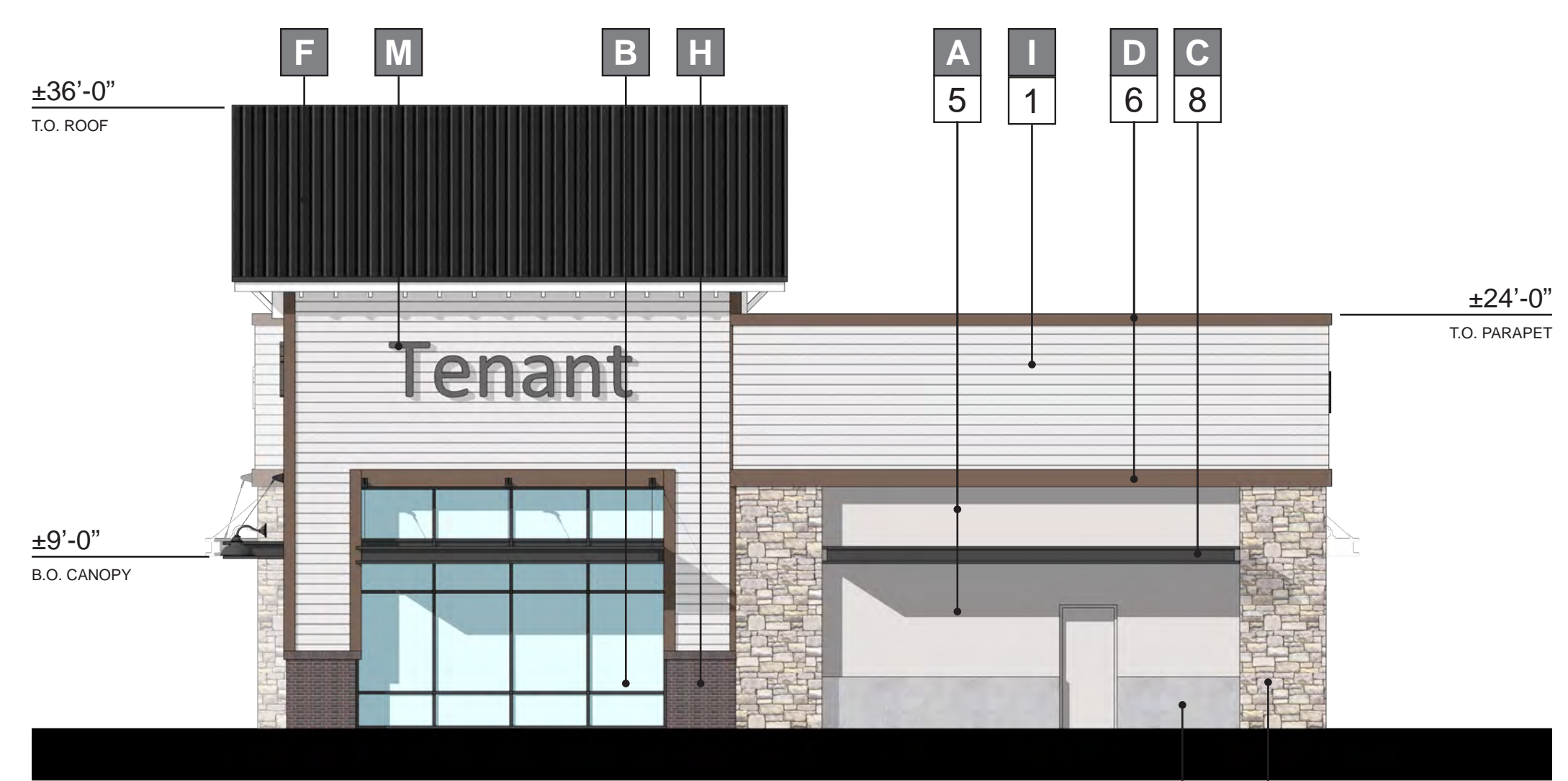
Material Legend

MATERIALS & FINISHES	
A	STUCCO: OMEGA - "20/30 SAND"
B	STOREFRONT: ARCADIA - AB6 "MEDIUM BRONZE"
C	METAL CANOPY
D	ARCHITECTURAL TRIM / CORNICE
E	LASERCUT METAL PANEL (MANUF. & PATTERN DESIGN TBD.)
F	STANDING SEAM METAL ROOF
G	STONE VENEER: ELDORADO STONE - LIMESTONE "GRAND BANKS"
H	BRICK VENEER: SIOUX CITY BRICK - "SAVANNAH TUDOR"
I	COMPOSITE SIDING: JAMES HARDIE - BEADED SELECT CEDARMILL
J	BOARD & BATTEN SIDING: JAMES HARDIE - SELECT CEDARMILL
K	FABRIC AWNING
L	LIGHT FIXTURE (MANUFACTURER TBD.)
M	TENANT SIGNAGE (BY OTHERS)
N	PRECAST CONCRETE BASE
O	SHUTTER

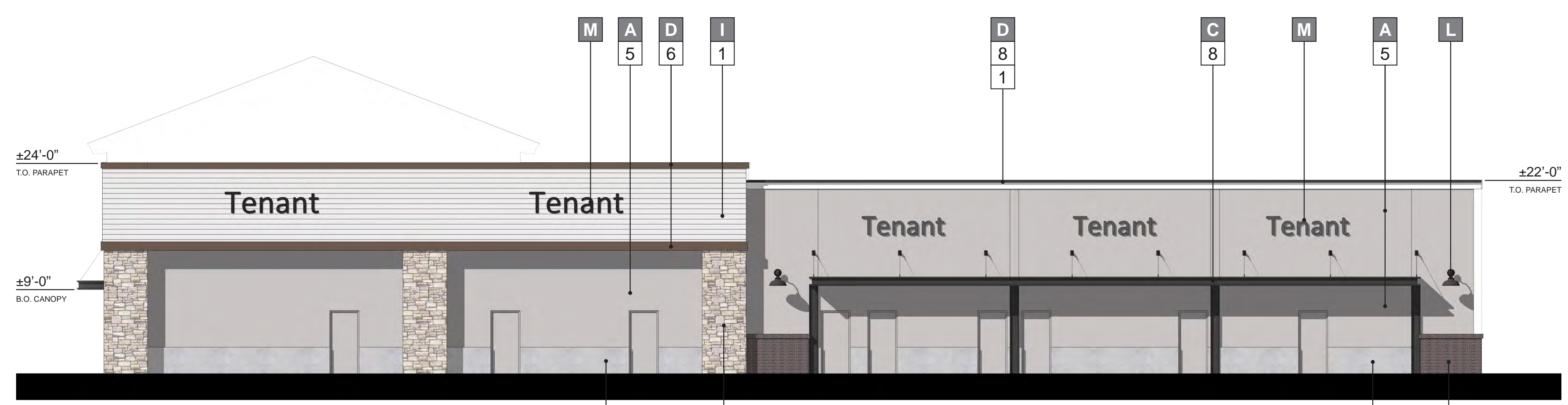
PAINT COLORS		
1	DUNN EDWARDS	DEW380 "WHITE"
2	DUNN EDWARDS	DEW382 "FADED GRAY"
3	DUNN EDWARDS	DE6213 "FINE GRAIN"
4	DUNN EDWARDS	DET625 "RECLAIMED WOOD"
5	DUNN EDWARDS	DE6381 "SILVER BULLET"
6	DUNN EDWARDS	DE6063 "BLACK WALNUT"
7	DUNN EDWARDS	DEA182 "ENCORE TEAL"
8	DUNN EDWARDS	DEA187 "BLACK"



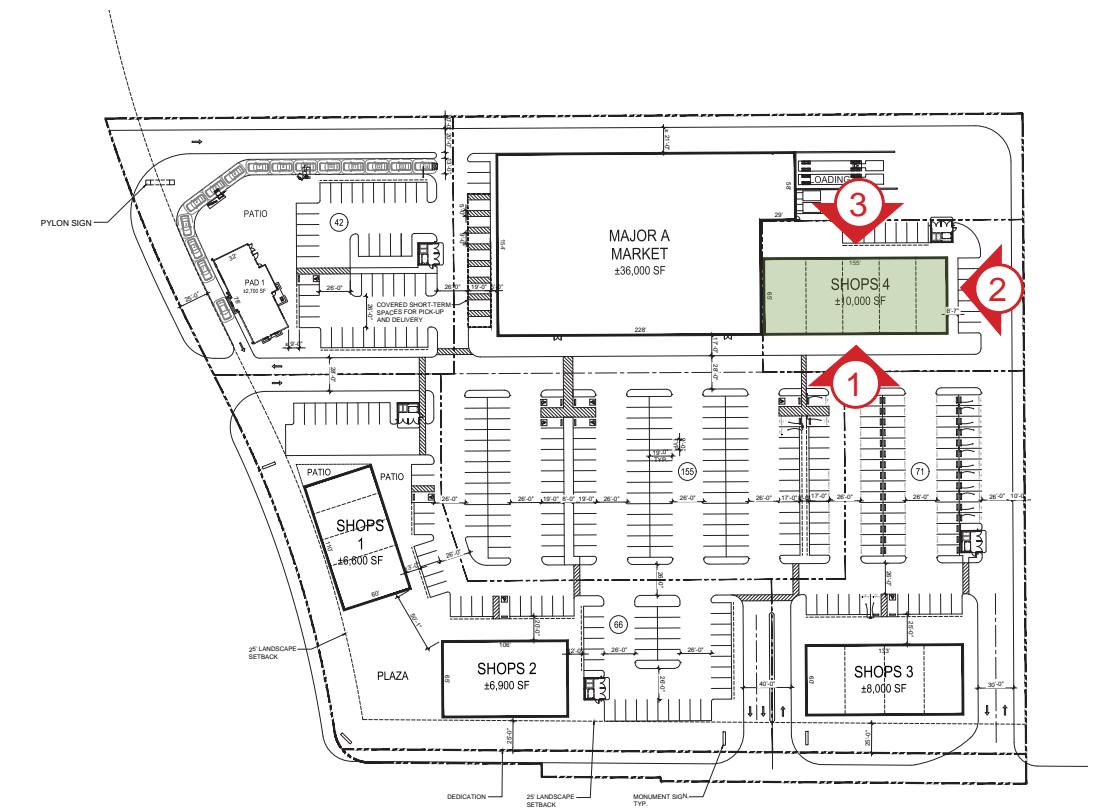
1 SOUTH ELEVATION (FRONT)



2 EAST ELEVATION (RIGHT)



1 NORTH ELEVATION (REAR)



Material Legend

MATERIALS & FINISHES	
A	STUCCO: OMEGA - "20/30 SAND"
B	STOREFRONT: ARCADIA - AB6 "MEDIUM BRONZE"
C	METAL CANOPY
D	ARCHITECTURAL TRIM / CORNICE
E	LASERCUT METAL PANEL (MANUF. & PATTERN DESIGN TBD.)
F	STANDING SEAM METAL ROOF
G	STONE VENEER: ELDORADO STONE - LIMESTONE "GRAND BANKS"
H	BRICK VENEER: SIOUX CITY BRICK - "SAVANNAH TUDOR"
I	COMPOSITE SIDING: JAMES HARDIE - BEADED SELECT CEDARMILL
J	BOARD & BATTEN SIDING: JAMES HARDIE - SELECT CEDARMILL
K	FABRIC AWNING
L	LIGHT FIXTURE (MANUFACTURER TBD.)
M	TENANT SIGNAGE (BY OTHERS)
N	PRECAST CONCRETE BASE
O	SHUTTER

PAINT COLORS		
1	DUNN EDWARDS	DEW380 "WHITE"
2	DUNN EDWARDS	DEW382 "FADED GRAY"
3	DUNN EDWARDS	DE6213 "FINE GRAIN"
4	DUNN EDWARDS	DET625 "RECLAIMED WOOD"
5	DUNN EDWARDS	DE6381 "SILVER BULLET"
6	DUNN EDWARDS	DE6063 "BLACK WALNUT"
7	DUNN EDWARDS	DEA182 "ENCORE TEAL"
8	DUNN EDWARDS	DEA187 "BLACK"